



SIERRA CLADDING:
Queensland Spotted Gum



Coach House
TIMBERS

Making Your Ideas Work

Sierra Cladding

Secret fix hardwood cladding system BY COACH HOUSE TIMBERS

Sierra Cladding is profiled to create a continuous look with uninterrupted, clean lines, while allowing expansion and contraction without causing board damage. The boards can be used for both vertical and horizontal applications.

- Can be fixed directly onto battens, or over already existing wallboard
- Fixes to both timber and steel substructures
- End-matched for a continuous shadowline, and reduced waste-factor
- Anti-warping grooves milled in the back of the board to ensure stability
- Starter boards and finishing boards also available—gives your wall a neat finish for a complete system
- Internal and external corner trims available to create clean edges
- Sizes available:
 - ~ 138mm (to produce a 120mm cover) x 19mm
 - ~ 88mm (to produce a 70mm cover) x 19mm

SIERRA CLADDING IS IDEAL FOR:

External and internal cladding and facades

Commercial

Residential

External and internal feature walls

External high-rise features



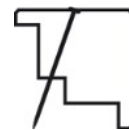
Sierra Starter 118 (100^{cov}) or 68 (50^{cov}) x 19mm



Sierra Intermediate 138 (120^{cov}) or 88 (70^{cov}) x 19mm



Sierra Finishing 113 (95^{cov}) or 63 (45^{cov}) x 19mm



External Corner
45 x 45mm



Internal Corner
36 x 36mm

Coach House Timbers has a style to suit every design. Visit our website, www.coachhousetimbers.com.au, to view our entire cladding range, or send us your drawings and we will match it.



Queensland Spotted Gum

Corymbia Maculata

Queensland Spotted Gum holds a strong place in the building and construction industry because it:

- **IS HIGHLY DURABLE:**

The natural durability of a species of timber is measured by its performance in ground contact and how it resists termite attack and decay. Queensland Spotted Gum passes with high results.

- **IS FIRE-RATED FOR BUSHFIRE ATTACK USE:**

Queensland Spotted Gum has been tested and approved for use up to and including Bushfire Attack Level (BAL) 29 for external use, and Building Codes Australia (BCA) Fire Hazard Properties specifications C1.10 and C1.10A for internal use

- **HAS HIGH STRUCTURAL VALUES:**

Queensland Spotted Gum's kiln dried density is 950 kg/m³ to 1,100 kg/m³ and boasts a high JANKA (or hardness) Rating of 11

- **IS NATIVE TO AUSTRALIA:**

Queensland Spotted Gum is of the Australian Eucalypt family, *Corymbia maculata*. Queensland Spotted Gum is grown and sourced sustainably under Australian Forestry Standards, through the Queensland Forestry Department

- **IS AVAILABLE IN A LARGE RANGE OF SECTIONS:**

Spotted Gum is one of a few species available in all sectional sizes from 100 x 25mm to 300 x 50mm kiln dried, and in all sizes in Green Off Saw material for bridge construction and heavy duty posts

- **HAS ARCHITECTURAL AND STRUCTURAL USES:**

Spotted Gum is used for cladding, lining, screening, decking, flooring, staircase, handrail, pergola, bridge, post, wharf and board walk applications and many more architectural features. It easily attains F27 when kiln dried, or F17 when unseasoned.



Queensland Spotted Gum (*Corymbia maculata*)

All these features are nice, but Coach House Timbers has gone the extra mile to ensure your product is:

- **DRIED**

Strict kiln drying to our own schedule for proven results; dramatically reduced movement in the boards

- **TREATED**

Alkaline Copper Quaternary (ACQ) Treated to comply with Australian Standard 4706

- **GRADED**

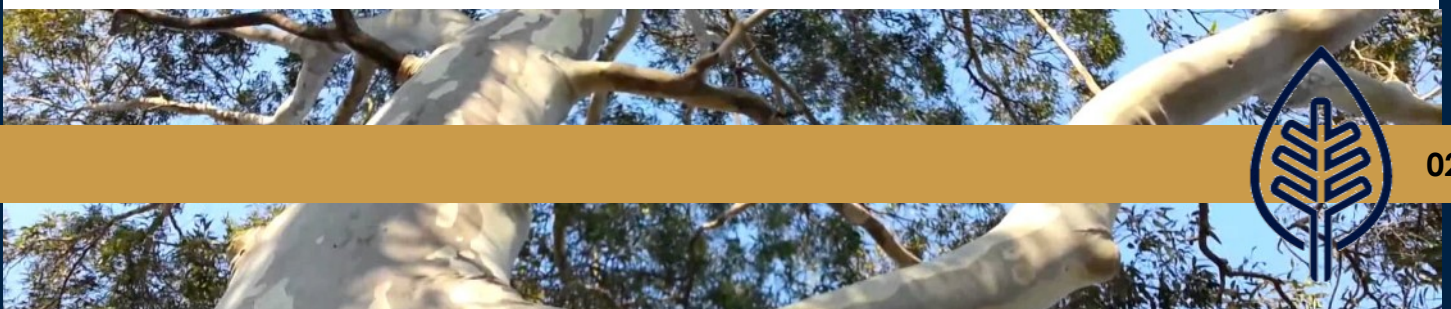
To Australian Standard 2796—1 and 2 and Australian Standard 2802

- **SET LENGTH**

On request, up to 6.0m and excellent random length spec of heavy 3.0-3.6m

- **FINISHED**

Supplied dressed; pre-oiling or pre-coating services available on request



Storage and Preparation

STORAGE

Sierra Cladding: Queensland Spotted Gum is a kiln dried product, so it is important that the moisture content remain stable and close to the equilibrium moisture content of the local atmosphere of where it is to be used. This will ensure a minimum of in-service movement.

- **Protect from the weather:**

The packaging should not be removed until the area is ready for the cladding to be installed. *Coach House Timbers takes NO responsibility for damaged boards if the packaging is removed before the site is ready.*

Packaging may be damaged during transport and delivery. It is your responsibility to check this and act accordingly, especially if there is a chance of rain.

If there is a chance of rain, ensure that the package is well out of the weather. The packaging and the product **SHOULD NOT** get wet.

- **Store in a well-ventilated area:**

DO NOT store in areas where humid conditions prevail (i.e. tin shed with earthen floors).

Each pack of timber should be stored in level ground, elevated by at least 30mm to prevent moisture absorption in the bottom boards. Coach House Timbers delivers all packs with gluts strapped to the base of the pack at 600mm centres (maximum) to assist with ventilation and moisture control, and to prevent bowing and sagging. *We take NO responsibility for damaged boards if these gluts are removed prior to installation.*

PREPARATION

When choosing a finish for your cladding, ensure that it is both water and UV resistant, and allows the timber to breathe.

It is important to seal the end-match and/or sawn ends to prevent moisture ingress into the timber, which can lead to decay, and to ensure protection to the structural framing

Remove all sharp edges and other irregularities which may cause a break-down in the coating.

It is advisable that at least one coat of your chosen finish be applied to all faces and edges prior to installation for maximum protection against moisture absorption. Coach House Timbers has a pre-oiling/pre-coating service available on request.

Pre-drill holes to install the fasteners, particularly near the end-grain. Ensure that the hole is at least the same diameter as the root diameter of the screw, and that it is drilled in the specially milled groove in the tongue of the board.



Installation

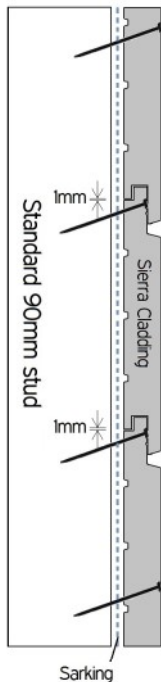


Diagram 1: Sierra horizontal fixing details

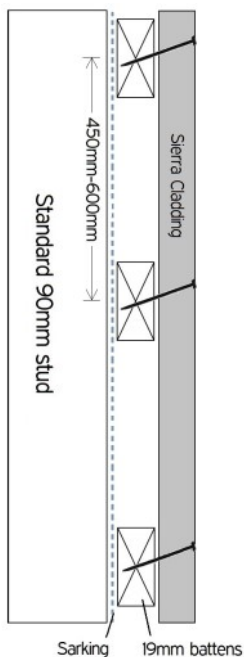


Diagram 2: Sierra vertical

INSTALLATION

Fixing:

A vapour permeable, fire-retardant building paper, such as CSR Proctorwrap, must be fixed as sarking to the substrate prior to installation of the boards.

Suitable wall insulation batts, such as Autex Polyester Thermal batts, should be installed behind the building paper to reduce heat transmission from the exterior to the interior. *Before purchasing any insulation batts, ensure you are familiar with the product and the manufacturer's recommendations for application*

It is essential that the boards are installed with a 1mm gap to accommodate inevitable movement

Horizontal fixing: boards can be fixed directly to the stud wall over the building paper (see Diagram 1)

Vertical fixing: we recommend that 19mm battens be fixed at 450-600mm centres to the stud wall over the building paper, then the boards fixed to the battens (see Diagram 2)

Coach House Timbers recommends Type 17 Countersunk, Stainless Steel 304, Square Drive #2, 10-gauge x 50-65mm screws, which can be installed in a one-step operation using a low-speed drill.

It is important that screws are installed on a slight angle (see diagrams) and in the specially milled grooves on the tongue

Screws should be installed into pre-drilled holes that are the same diameter as its root diameter.

If corner trims are to be used, ensure that the cladding boards finish no more than 2mm from the trims (see Diagrams 3 and 4).

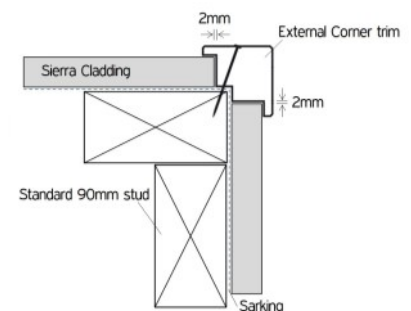


Diagram 3: External Corner fixing details

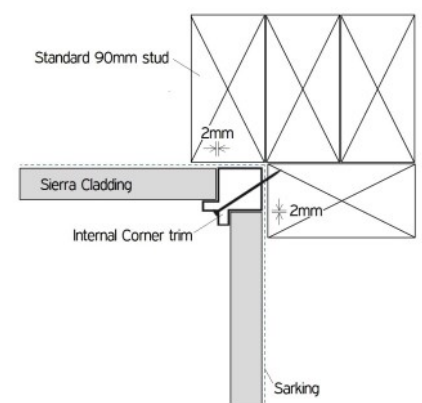


Diagram 4: Internal Corner fixing details



Installation

(continued)

Finishing:

Familiarise yourself with the manufacturer's recommendations prior to applying your chosen finish.

As with any timber, if Queensland Spotted Gum is exposed to the weather without any protective coating to inhibit water penetration, the natural colouring will be leached gradually from the surface cells and the cladding will develop a greyish appearance. Slight cupping may ensue.

Oils are designed to penetrate the surface and protect against the elements. Being organic, they do not protect against naturally occurring bacteria, which promotes and increases the greying effect. Regular maintenance is essential if this is not the desired effect

Oils and other protective finishes can be applied by either roller, spray or brush. Ensure that you do not apply the finish too thick as it will run. If you find that the finish has run in some areas, spread it lightly with either a brush or a roller.

Coach House Timbers recommends:

- **Intergrain UltraDeck by Dulux:**

Intergrain UltraDeck is a long-lasting water-based oil for exterior applications. It contains Hydroguard Technology, unique to Dulux products, which provides protection against Australia's harsh conditions. It resists stain absorption and dirt and dust adhesion, protecting your timber and keeping it clean and looking great for longer. Coach House Timbers recommends a 6-9 month maintenance cycle

- **Cutek CD50:**

Cutek CD50 is a penetrative oil designed to protect against the damaging effects of moisture and increase timber's in-service life. It can be applied as clear, or can have a colour-tone added, which increases UV protection, preventing natural colour-change. Coach House Timbers recommends a 3-6 month maintenance cycle.



Maintenance

MAINTENANCE

If properly maintained, Sierra Cladding: Queensland Spotted Gum will not only look great for many years, but will last a lot longer too.

- **Cleaning**

Some finishes are designed to dry with a smooth, gloss finish to prevent dirt and dust adhesion. If your chosen finish does not have these features, it is advisable that you clean your cladding periodically to inhibit fungal growth and to keep it looking great.

Pressure washing is a method that effectively removes all dirt and grime without affecting the coating—it is advisable that you hire a professional, as the high pressure from the water can damage the timber if the pressure-washer is used incorrectly—or there are timber cleaning products available, such as Cutek QuickClean, to give your timber a thorough clean. Be sure to read the manufacturer's recommendations before use, and follow their instructions.

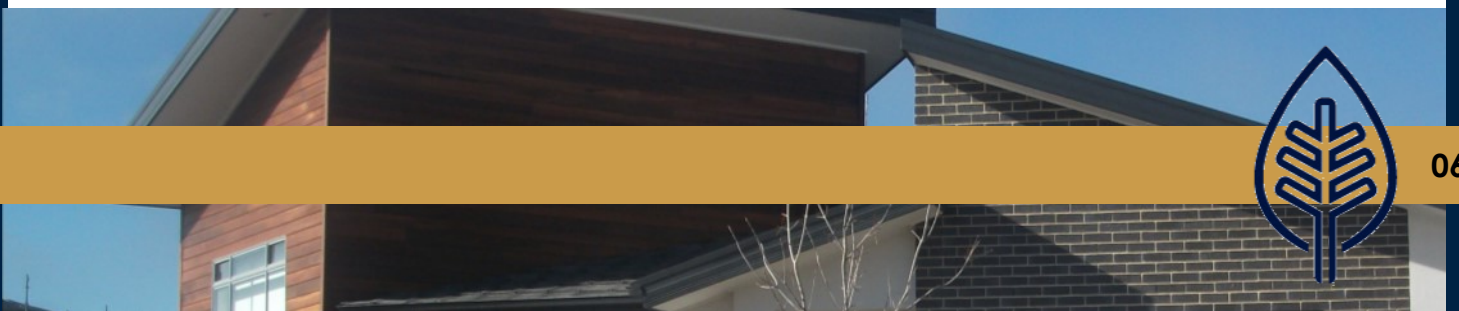
- **Recoating**

After installation, 1-2 coats of the chosen finish should be applied to maximise protection against entry of moisture into the wood, according to the manufacturer's recommendations.

With clear finishes, commitment to maintaining and recoating is necessary to keep your timber looking great—*Coach House Timbers holds no responsibility for boards that are damaged through lack of care.* Reapplication may initially be required within the first 12 months, especially in highly exposed areas.

It is important that all surfaces to be recoated are cleaned and dried first if the coating is to spread evenly and adhere properly.

You should not have to sand the boards unless the surface is rough, or there are areas where the coating has broken down. In this case, you should only have to sand the affected board, but be sure to add a little extra of your chosen finish to ensure equal protection to the other boards.





Coach House

TIMBERS

21-23 Old Dairy Close

MOSS VALE NSW 2577

P: 02 4869 5443 | **F:** 02 4869 4838

E: info@coachhousetimbers.com.au

www.coachhousetimbers.com.au