



**Bringing your vision to life.**



## OUR STORY

Every day, we work with design and construction professionals transforming high-grade timber into building solutions for commercial and residential projects.

We're master craftsmen with a passion for modern design. We combine our timber-milling heritage with insight and style to offer the best of both worlds - manufacturing a suite of products, made out of specialty, hard-to-find timbers and making them available off the shelf.

From the beginning, we provide smart advice to help fuel your vision. We follow through with the professional support and products you need to make every project an architectural triumph.







Bring  
us your  
vision,  
and we'll  
bring it  
to life.

## MISSION

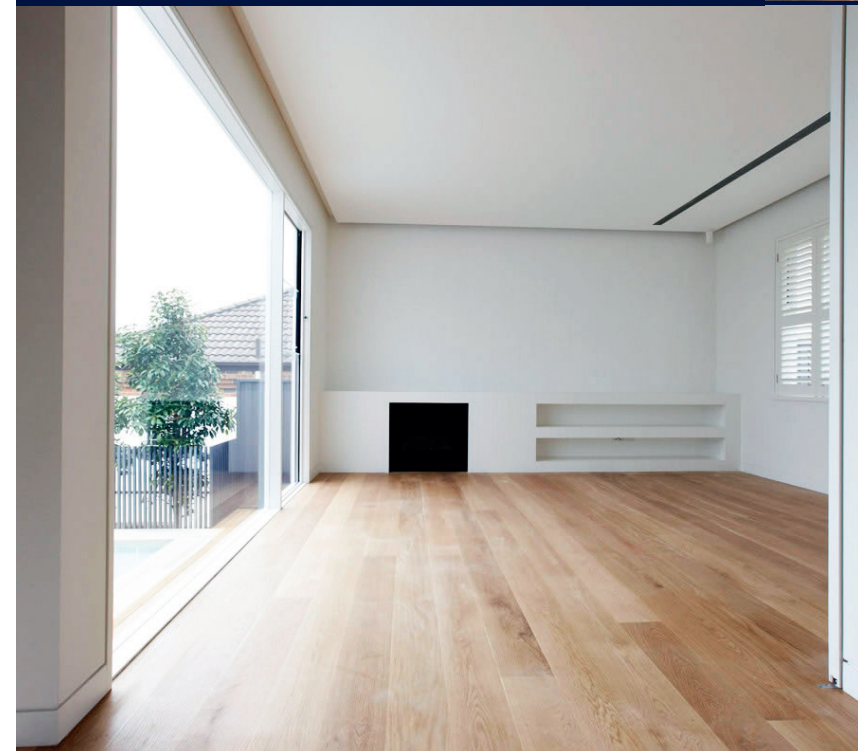
We aim to provide our customers with a highly personable and responsive service to ensure that their unique timber needs are met every time, on time, sustainably and to budget.



## EXPERIENCE

**Get the insight, ideas and innovation to use timber to its full potential.**

We love working on projects right from the start, providing valuable input based on years of experience, insight into different applications, technical expertise, and practical know-how.



## WHY US?

**With knowledge comes inspiration.**

When it comes to timber, our ingrained expertise and access to specialty timbers give you creative choices you never knew were possible. We'll help you dream to be different and prepare for practicalities.







Savour the aura of genuine charring on our premium durable Australian hardwood cladding. Fired to your choice of depth and pre-sealed for reproduction of an ancient Japanese tradition. Shou Sugi Ban was developed centuries ago as a process to preserve timber, and can be emulated to enhance your timeless project.





# OVAL ROOM, UTS DR CHAU CHAK WING BUILDING

Broadway, Ultimo

The Dr Chau Chak Wing Building is a new learning facility for the University of Technology in Sydney, designed by world-celebrated architect, Frank Gehry. There are many unique aspects to the overall design, including a theatre, two student commons, seminar rooms, and two oval rooms. Coach House Timbers worked with Top Knot Carpentry by supplying the laminated Blackbutt treads for the Oval Rooms and numerous joinery profiles to the overall project.

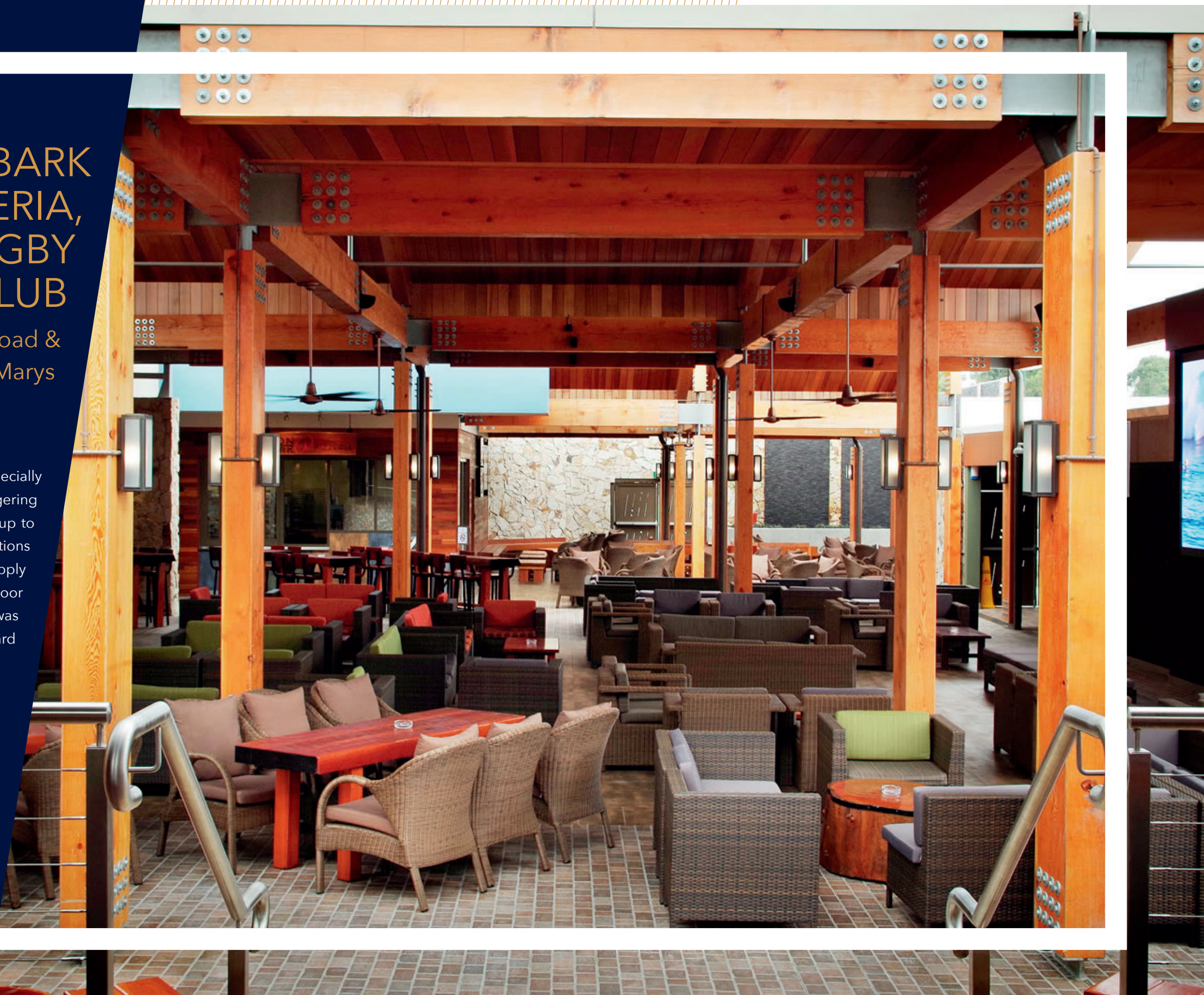




# THE IRONBARK TERRACE & PIZZERIA, ST MARYS RUGBY LEAGUE CLUB

Cnr of Forrester Road &  
Boronia Road, St Marys

The unique feature of this project lies in the especially imported Oregon beams from Canada. At a staggering 450 x 200 solid finished section size, spans of up to 5.4-7.0m were achieved. Ridgemont Constructions approached Coach House Timbers for the supply of the hardwood finished for the new outdoor dining and sports bar areas and the project was completed using Western Red Cedar lining board and Ironbark for the decking and joinery.





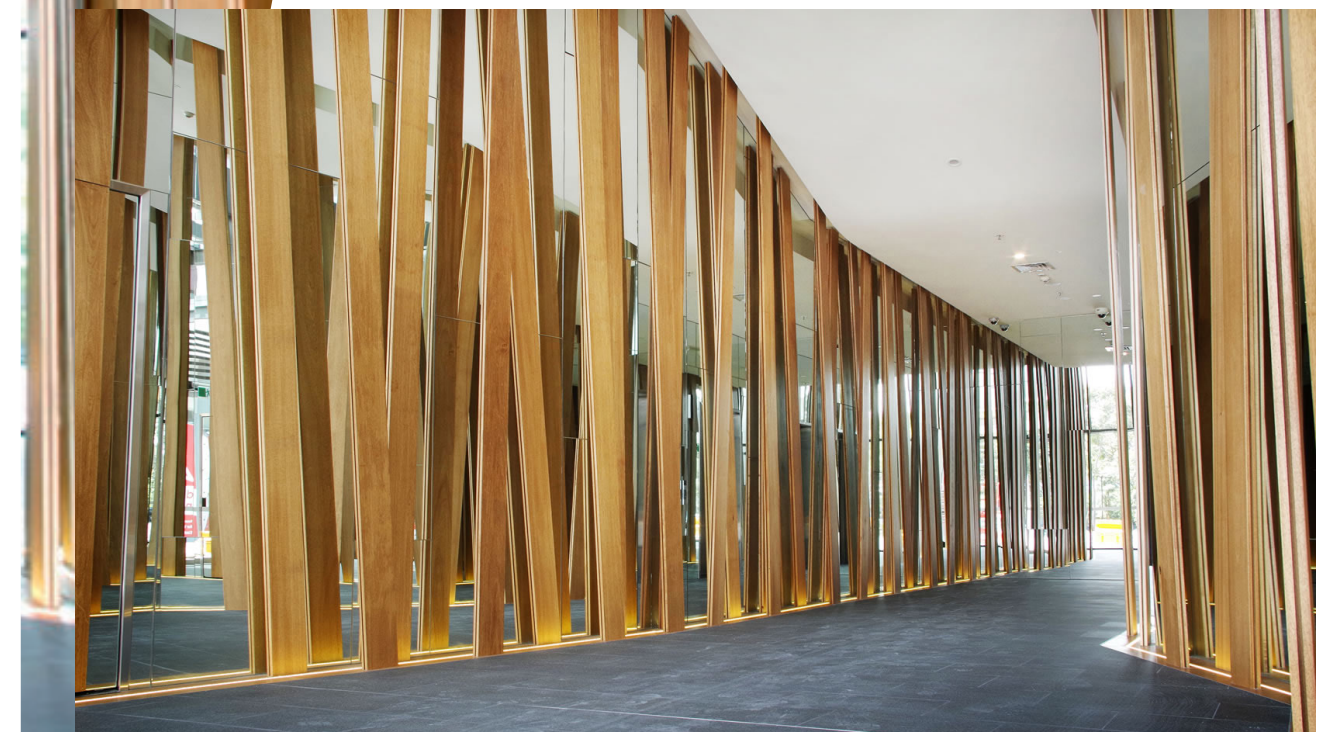


# EAST VILLAGE, VICTORIA PARK

Defries Avenue, Zetland

East Village is a new retail/residential village in Zetland. This exciting project exhibits a major breakthrough in urban design that is not apparent to the public eye. Several acres of rooftop footprint have been transformed to a landscaped parkland environment - complete with waterways, playgrounds, and grassed entertainment areas for social relaxation. Coach House Timbers worked closely with DASCO and el Haddad Constructions in supplying Ironbark screens, decking and seating to help realise this truly amazing escape in the centre of a business district.

Another major feature is at the entry levels where, symbolically, the tone is set in the free standing fins creating enchanted woodlands. Floor to ceiling timbers set at eclectic angles are set in front of huge mirrored panels to complete the forested experience. With free standing spans of 5.4m to 6.0m and greater, Coach House Timbers met the challenge by encasing metal spines into the timber to ensure its safety and ability to free stand without distortion.





## IVANHOE HOTEL, MANLY

27 The Corso, Manly Beach

When the Ivanhoe Hotel in Manly got a major make-over, Coach House Timbers was engaged by the builder, Ridgmont Constructions, to supply the internal American White Oak wall and ceiling linings for the lobby area, and the external Pacific/New Guinea Teak seat slats for the outdoor dining area.





# UNIVERSITY OF SYDNEY BUSINESS SCHOOL

Abercrombie Precinct, Darlington

Coach House Timbers was approached by John Holland Group to supply the Blackbutt mullions for the Abercrombie Precinct – a new learning centre at the University of Sydney Business School in Darlington. These were supplied square-dressed, with holes pre-drilled to the architect’s specifications, and pre-finished with a four-stage seal and coat system from Europe, ensuring the lowest possible maintenance programme. Out of almost 8,000 pieces we supplied, not one was rejected for misalignment of the precision drilled specification!





# BERRIMA RESIDENCE

## Berrima

When an historical coach house in Berrima came under new ownership, it was converted to a private residence. It needed a complete refurbishment, but the owners wanted to maintain the aged look. They came to Coach House Timbers for the flooring - we supplied them with deep wire-brushed wide-board American White Oak, which they coated after installation with their chosen finish. The wire-brushing meant that the colour sank deep within the timber, highlighting the grain and creating a beautiful aged look.







**P** 02 4869 5443   **F** 02 4869 4838  
**E** [info@coachhousetimbers.com.au](mailto:info@coachhousetimbers.com.au)

21-23 Old Dairy Close (P.O. Box 139) Moss Vale NSW 2577

[www.coachhousetimbers.com.au](http://www.coachhousetimbers.com.au)

